

COTENTS

TITLE	PAGE
CONTENTS	page 1 of 6
RECORD OF REVISIONS	page 1 of 6
GENERAL DESCRIPTION	page 2 of 6
FUNCTION LAYOUT	page 2 of 6
FEATURES	page 3 of 6
INTERFACE DEFINITION	page 3 of 6
CONTROLLER DIMENSIONS	page 5 of 6
KEY & IR BOARD SYSTEM SCHEMATIC	page 6 of 6
OPERATION REQUIREMENT	page 6 of 6

RECORD OF REVISIONS

REVISION NO.	DATE	PAGE	DESCRIPTION

1. GENERAL DESCRIPTION

RTD2664 V1.0 is a multi-purpose LCD monitor. It is designed to support dual/single LVDS LCD panel.

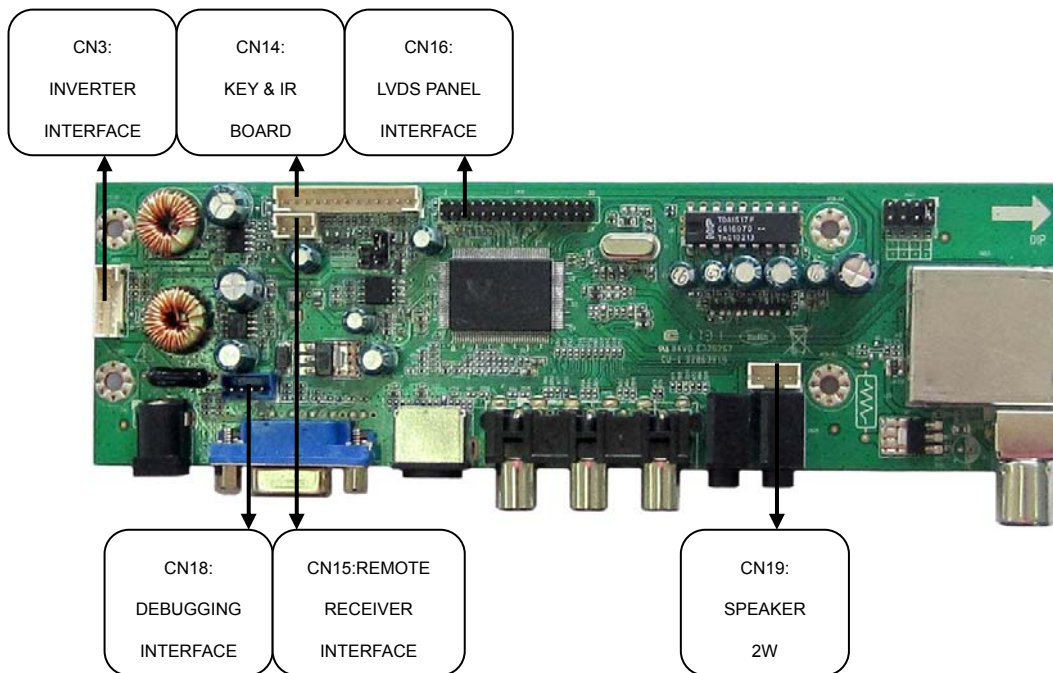
The main feature of **RTD2664 V1.0** can support VGA,AV,S-Video,PC Audio,TV signal input and speaker output.

Note:The specification of the board includes the description of all functions. Therefore,our clients can select the functions which they require to produce the board.But the specification can be used universally.

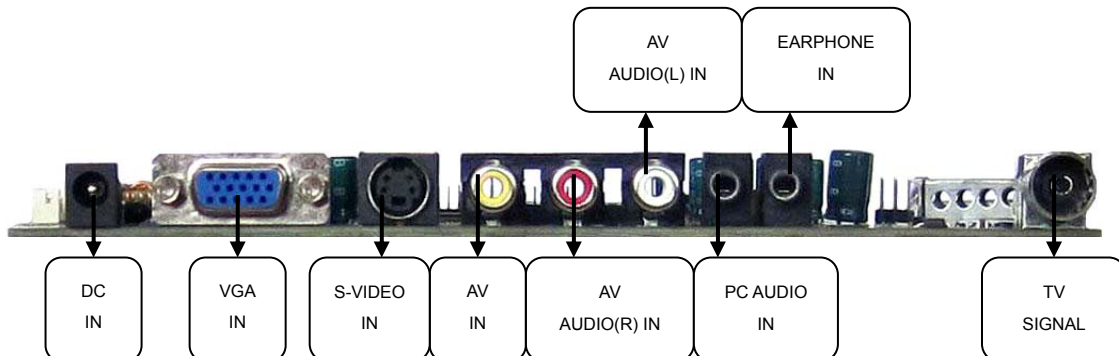
2. FUNCTION LAYOUT

The following all pictures are only for reference. Please take the actual objects as standards.

Elevation of RTD2664 V1.0



Side Elevation of RTD2664 V1.0



3. FEATURES

Below you will find the detailed feature

CHIPSET	RTD2664			
OSD LANGUAGE	Chinese,English(French,Spanish, Portuguese,Korean, Italian,German, Dutch)(Option)			
VIDEO INPUT	TV	VIDEO SYSTEM	PAL/SECAM,NTSC(Option)	
		SOUND SYSTEM	BG,DK,I (M/N,L, L' Option)	
		RECEIVE CHANNEL	100	
	S-Video	S-Y:1.0V Vp-p+/-5%	S-C:0.3Vp-p+/-5%	
	PC-RGB	Format	Up to 1600*1200@60HZ	
		Color	16bit, 24bit, 32bit	
I2C	DDC, EDID			
POWER	Power Requirement	12V		
	To panel	3.3V,5V,12V		
	Manage	Low power consumable mode: standby \leq 3w		
KEY FUNCTIONS	CH-,CH+,MENU,VOL-,VOL+,SOURCE ,POWER			
AUDIO OUTPUT	2*2W @ 8 Ω			
COMB FILTER	2D			
DE-INTERLACE	2D			
WEAK SIGNAL ENHANCEMENT		/		
NOISE REDUCTION		YES		
NICAM/A2, TELETEXT		Optional		
TERMINALS	Input	TV Input	1 IEC 75 Ω	
		PC-RGB Input	1D-SUB 15PIN terminal blue color	
		CVBS Input	1RCA terminal yellow color	
		PC-RGB Audio Input	1 earphone terminal black color	
		S-Video	1S-Video terminal black color	
		CVBS Audio Input	2RCA terminal white color, red color	
	Output	To Panel	30PIN/2.0 jack(Option)	

4. INTERFACE DEFINITION

CN3 (6PIN/2.0) INVERTER INTERFACE

NO.	SYMBOL	DESCRIPTION	ELECTRIC CHARACTER
1	GND	Ground	---
2	GND		

3	ADJUST	Brightness adjustment	0-5V adjustable
4	BKLTON	Black-light ON/OFF control	5V , 1K ohm output impedance
5	12V_POWER	+12V DC Power supply	INVERTER Power Supply
6	12V_POWER	+12V DC Power supply	INVERTER Power Supply

CN15 (3PIN/2.0) REMOTE RECEIVER INTERFACE

NO.	SYMBOL	DESCRIPTION
1	IR_IN	Remote receiver
2	GND	Ground
3	STB_VCC	+5V Power supply

CN16 (2*15PIN/2.0) LVDS PANEL INTERFACE

NO.	SYMBOL	DESCRIPTION
1	VCC	Power for panel
2	VCC	Power for panel
3	VCC	Power for panel
4	GND	Ground
5	GND	
6	GND	
7	RX00-	LVDS ODD 0- Signal
8	RX00+	LVDS ODD 0+ Signal
9	RX01-	LVDS ODD 1- Signal
10	RX01+	LVDS ODD 1+ Signal
11	RX02-	LVDS ODD 2- Signal
12	RX02+	LVDS ODD 2+ Signal
13	GND	Ground
14	GND	
15	RXOC-	LVDS ODD Clock- Signal
16	RXOC+	LVDS ODD Clock+ Signal
17	RX03-	LVDS ODD 3- Signal
18	RX03+	LVDS ODD 3+ Signal
19	RXE0-	LVDS EVEN 0- Signal
20	RXE0+	LVDS EVEN 0+ Signal
21	RXE1-	LVDS EVEN 1- Signal
22	RXE1+	LVDS EVEN 1+ Signal
23	RXE2-	LVDS EVEN 2- Signal
24	RXE2+	LVDS EVEN 2+ Signal
25	GND	Ground
26	GND	
27	RXEC-	LVDS EVEN Clock- Signal

28	RXEC+	LVDS EVEN Clock+ Signal
29	RXE3-	LVDS EVEN 3- Signal
30	RXE3+	LVDS EVEN 3+ Signal

CN19 (4PIN/2.0) SPEAKER 2W

NO.	SYMBOL	DESCRIPTION
1	R	Right audio channel out
2	GND	Ground
3	GND	Ground
4	L	Left audio channel out

CN14 (13PIN/2.0) KEY & IR BOARD

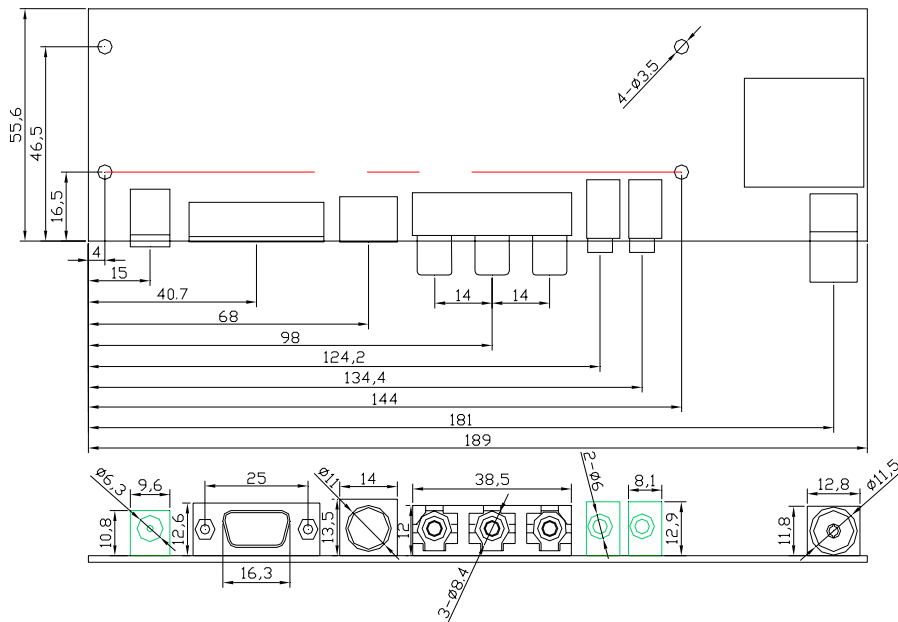
NO.	SYMBOL	DESCRIPTION
1	CH-	CH- Key
2	CH+	CH+ Key
3	MENU	MENU Key
4	PC_AV	SOURCE Key
5	VOL-	VOL- Key
6	VOL+	VOL+ Key
7	GND	Ground
8	GREEN_LED	Green indicator
9	RED_LED	Red indicator
10	ON/OFF	ON/OFF Key
11	GND	Ground
12	IR_IN	Remote receiver
13	STB_VCC	+5V DC power supply

CN18 (4PIN/2.0) DEBUGGING INTERFACE

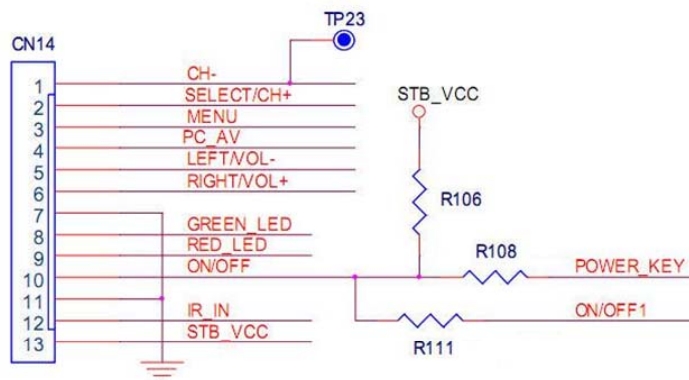
NO.	SYMBOL	DESCRIPTION
1	GND	Ground
2	TXD	Transmit data
3	RXD	Receive data
4	STB_5V	+5V DC Power supply

5. CONTROLLER DIMENSIONS

The dimension is identical to the actual objects. But maybe exist the slight error of measures about 1%. It is allowed in design.



6. KEY BOARD & IR BOARD SYSTEM SCHEMATIC



7. OPERATION REQUIREMENT

- Do not pressed and distorted.
- Keep away from static and water.
- Relative humidity : $\leq 80\%$
- Storage temperature: $-10\sim+60^{\circ}\text{C}$
- Operation temperature: $0\sim+40^{\circ}\text{C}$